

- -
 -
 -
 -
 -
 -
 -
-

(Grading)

(Staging)

(biopsy)

(Angiography)

(Ultrasonography)

(CT scan - computerized tomography scan)

helical)

(scanning

(MRI magnetic resonance imaging)

(Bone scan)

()

(Radioisotope scanning)

(Positron emission tomography PET scan)

(hyper-metabolism)
(hypo-metabolism)

(Biopsy)

)

(

(excisional biopsy)

)

(

(incisional biopsy)

(needle biopsy)

(Core biopsy)

1.5

12.5

(Fine needle aspiration)

(CT scan)



(Bone marrow biopsy)

(Bone marrow aspiration)



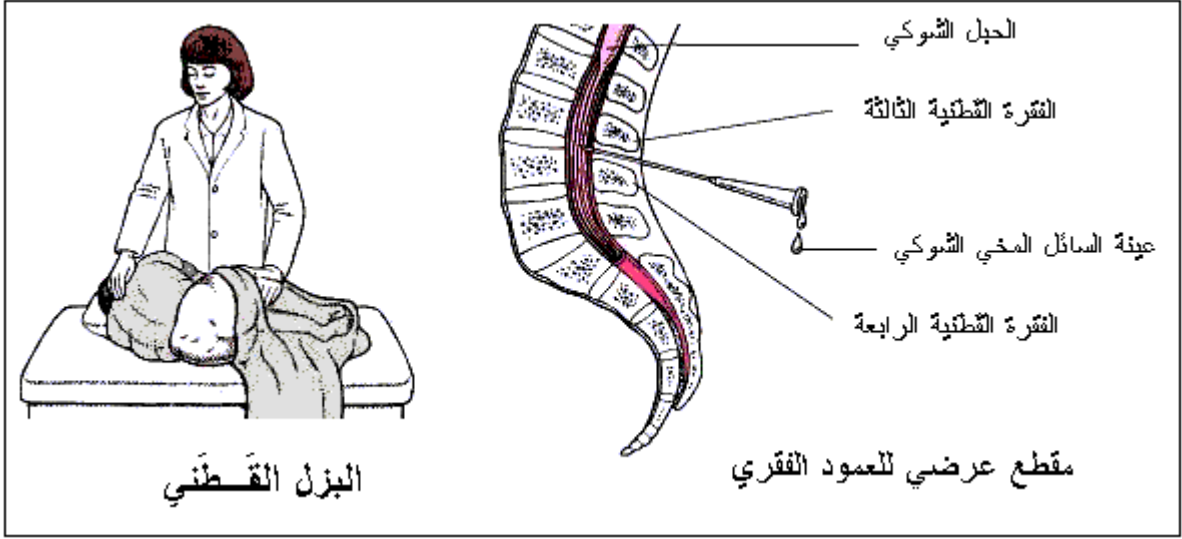
12.5

1.5

(Lumbar puncture)

(cerebrospinal fluid CSF)
)

(



(Tumor markers)

(CBC)

: ()

(white blood cells)

(Hemoglobin)

.()

(Hematocrit)

(Absolute neutrophil count ANC)

(neutrophils)

1000

.()

(Platelet count)

.()

(Antibodies)

(Cytochemistry)

(Flow cytometry)

(Antibodies)

%16

(Immunocytochemistry)

(Cytogenetics)

chromosomes)

(Translocation)

(Molecular genetic studies)

(antigen receptors)

()

2007 - 12 - 19 :

منشورات جمعية آدم لسرطان الطفولة 2008